

# DWR PARADEEP

Cyclone bulletin No.18

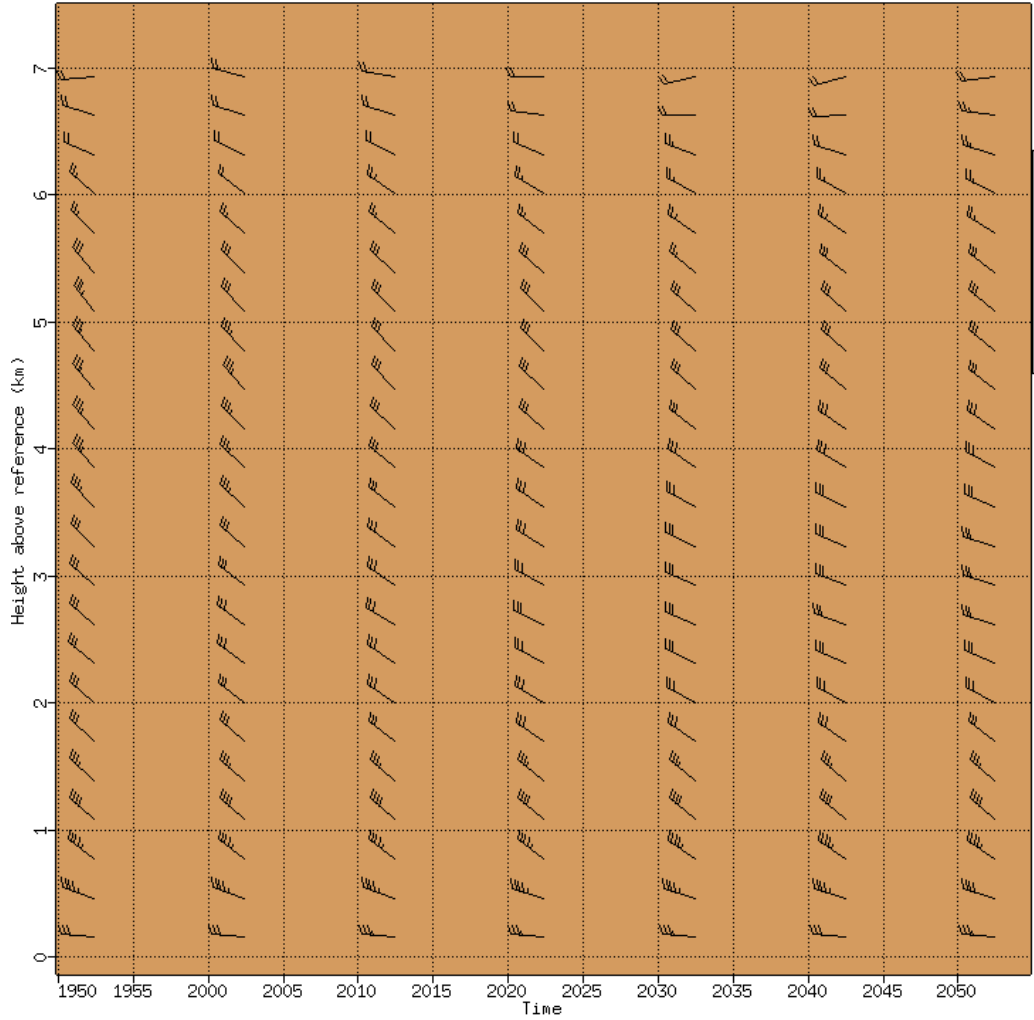
Cyclone : DANA

Time: 25/10/2024 02:30 IST

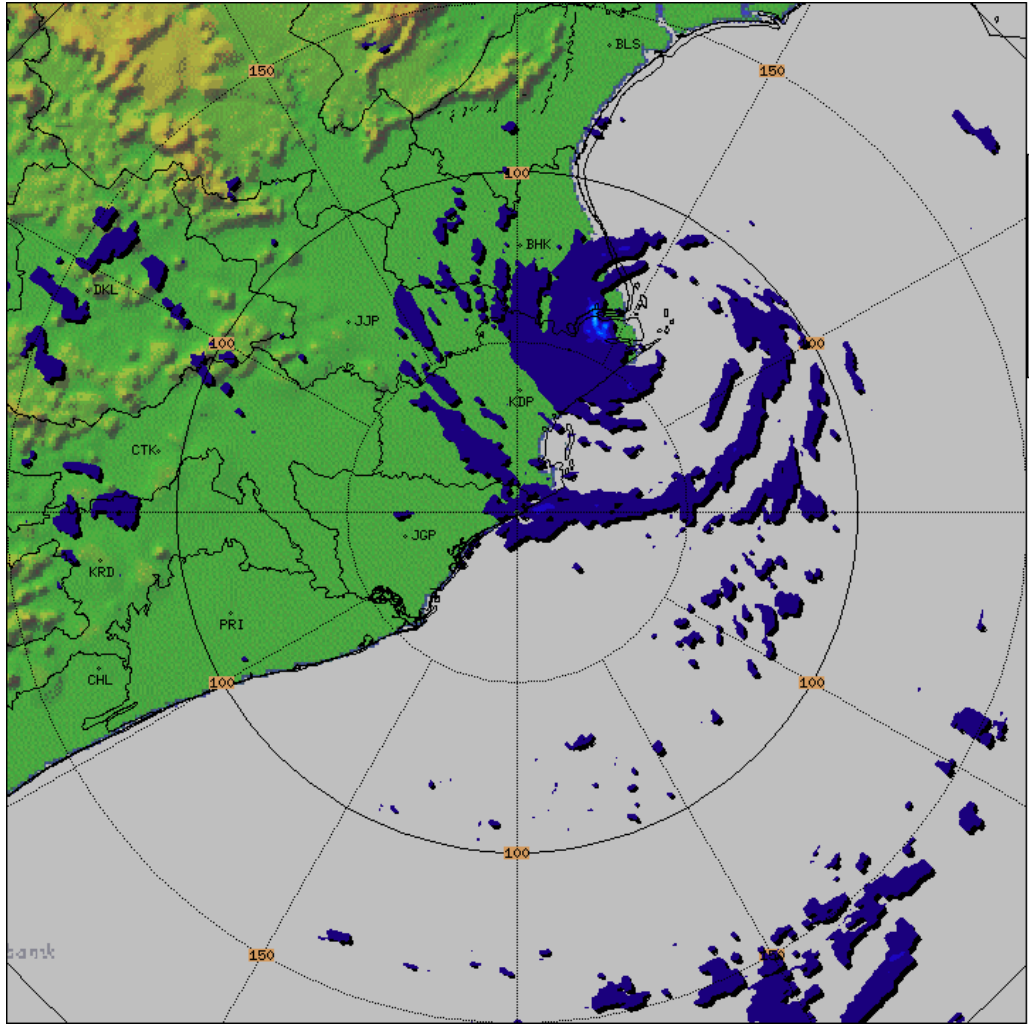
|    |  |                                |
|----|--|--------------------------------|
| 1. | Name of the Station  | DWR PARADEEP                   |
| 2. | Date & Time of observation (UTC)   | 24/10/2024 2100 UTC            |
| 3. | Name of Cyclone  | DANA                           |
| 4. | Information about the Eye of the cyclone   |                                |
|    | a)Is the Eye Visible   | Visible                        |
|    | b)Shape of the Eye   | Disorted circular              |
|    | c)Diameter of the Eye (km)   | 13km (approx)                  |
|    | d)Estimation of centre of the cyclone based on Eye/Spiral band observation   | 20.76N/86.98E/31.5deg/65.6km   |
|    | e)Echo top (20 dBZ level) of rain bearing clouds around the System within 100 km radius  | 12km                           |
|    | f) Maximum radar reflectivity (dBZ) in eye wall and Spiral band region, its height (km) and position (azimuth and distance from the radar) | 49.5dBZ/9.1km/21.6deg/61.7km   |
|    | g) Maximum reflectivity at any other area (spiral/ streamers etc)  | 39.5dBZ/6.8km/164.4deg/178.6km |
|    | h) Maximum radial velocity in observed (mps), its height (km) and its position (azimuth and distance from the Radar)                       | 37.19mps/0.7km/39.8deg/53.3km  |
|    | i) Maximum velocity in any other area (spiral / streamers / rain shields etc)  | -30.36mps/0.7km/17.9deg/56.7km |
| 5. | Tendency of the Cyclone  |                                |
|    | a. Intensity(Increasing/Decreasing)  | <u>Sustaining</u>              |
|    | b. Duration for which the information on movement pertains to  | One hour                       |
|    | c. Direction of Movement   | N                              |
|    | d. Estimated speed of Movement   | 10kmph(approx)                 |
| 6. | Any other Significant Feature  | N/A                            |
| 7. | Confidence   | GOOD                           |

Dhaneesh K (Sc.D)

OFFICER-IN-CHARGE  
DWR Paradeep

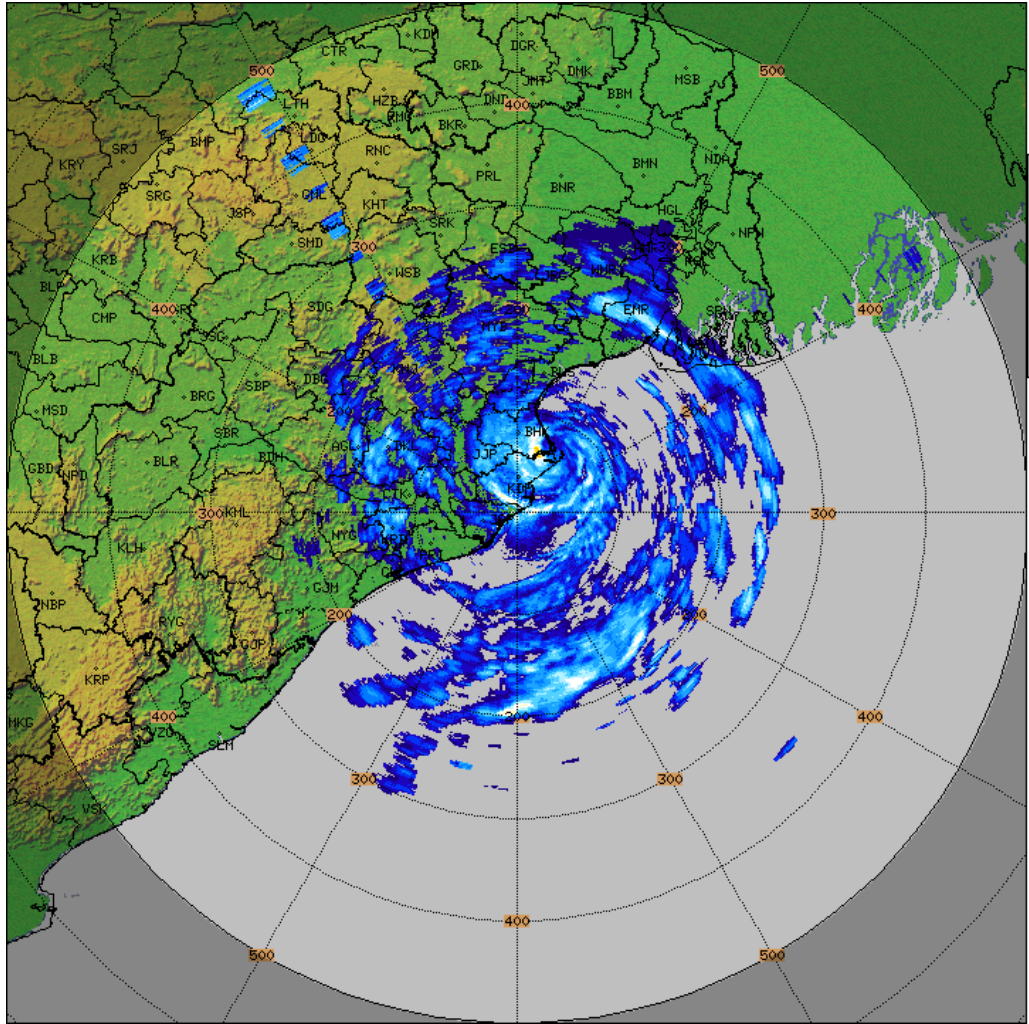


PARADEEP-RADAR  
Vol. Vel. Proc.  
VVP\_30KM  
Task: IMD-B  
#Intervals:26  
Heights:0-8 km  
Max Range:30 km  
**20:52:18Z**  
24 OCT 2024 UTC

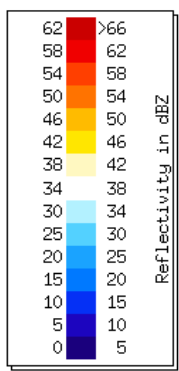


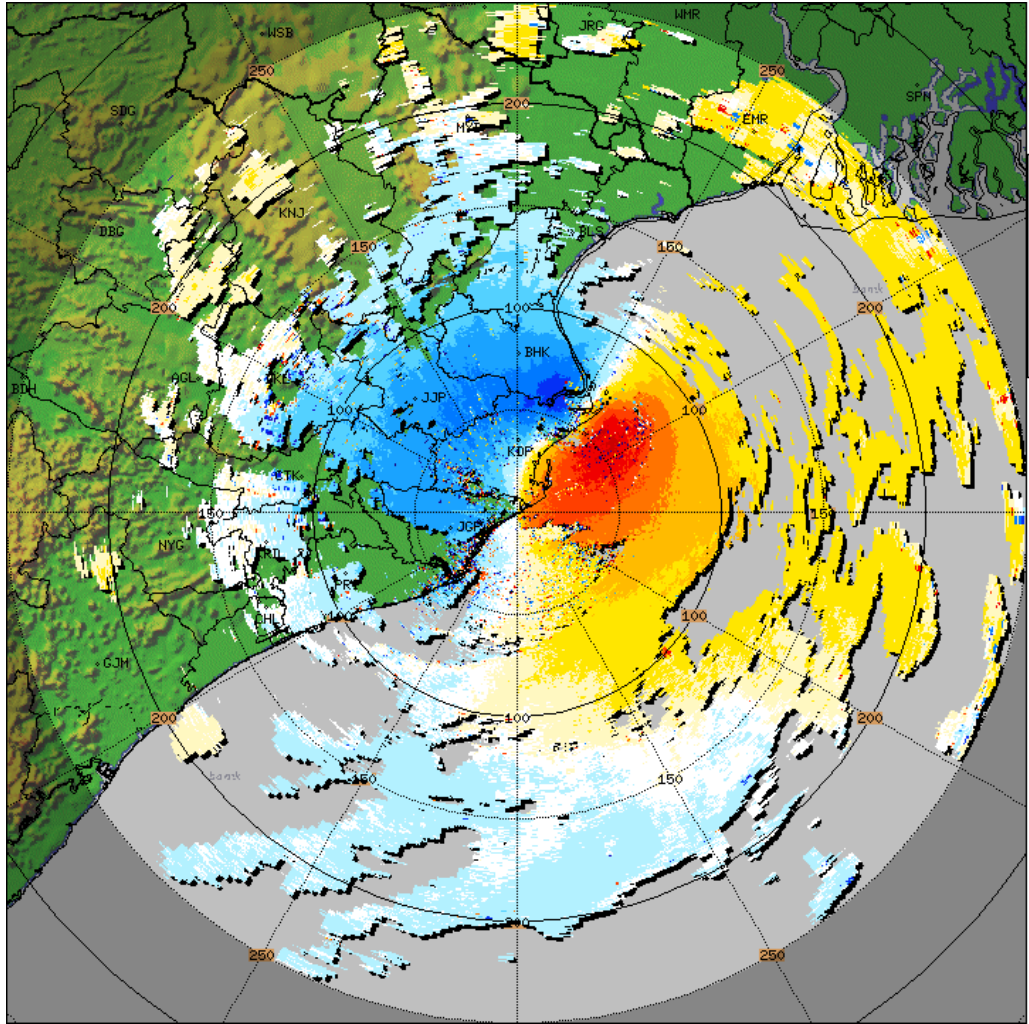
PARADEEP-RADAR  
 Surface Rainfall  
 SRI\_150  
 Task: IMD-B  
 PRF:600/450  
 Melt:Unknown  
 Max Range:150 km  
**20:52:18Z**  
**24 OCT 2024 UTC**

| Color          | Rainfall Rate in mm/h |
|----------------|-----------------------|
| Dark Red       | >100                  |
| Red            | 93                    |
| Orange-Red     | 87                    |
| Orange         | 80                    |
| Yellow-Orange  | 74                    |
| Yellow         | 67                    |
| Light Yellow   | 60                    |
| Light Green    | 54                    |
| Green          | 47                    |
| Light Blue     | 41                    |
| Blue           | 34                    |
| Dark Blue      | 27                    |
| Very Dark Blue | 21                    |
| Black          | 14                    |
| Dark Blue      | 7.6                   |
| Black          | 1.0                   |

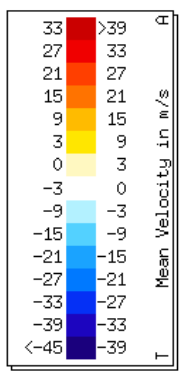


PARADEEP-RADAR  
 PPI  
 PPI\_Z  
 Task: IMD-C  
 PRF: 250Hz  
 Elevation:0.5  
 Max Range:500 km  
**21:00:25Z**  
**24 OCT 2024 UTC**

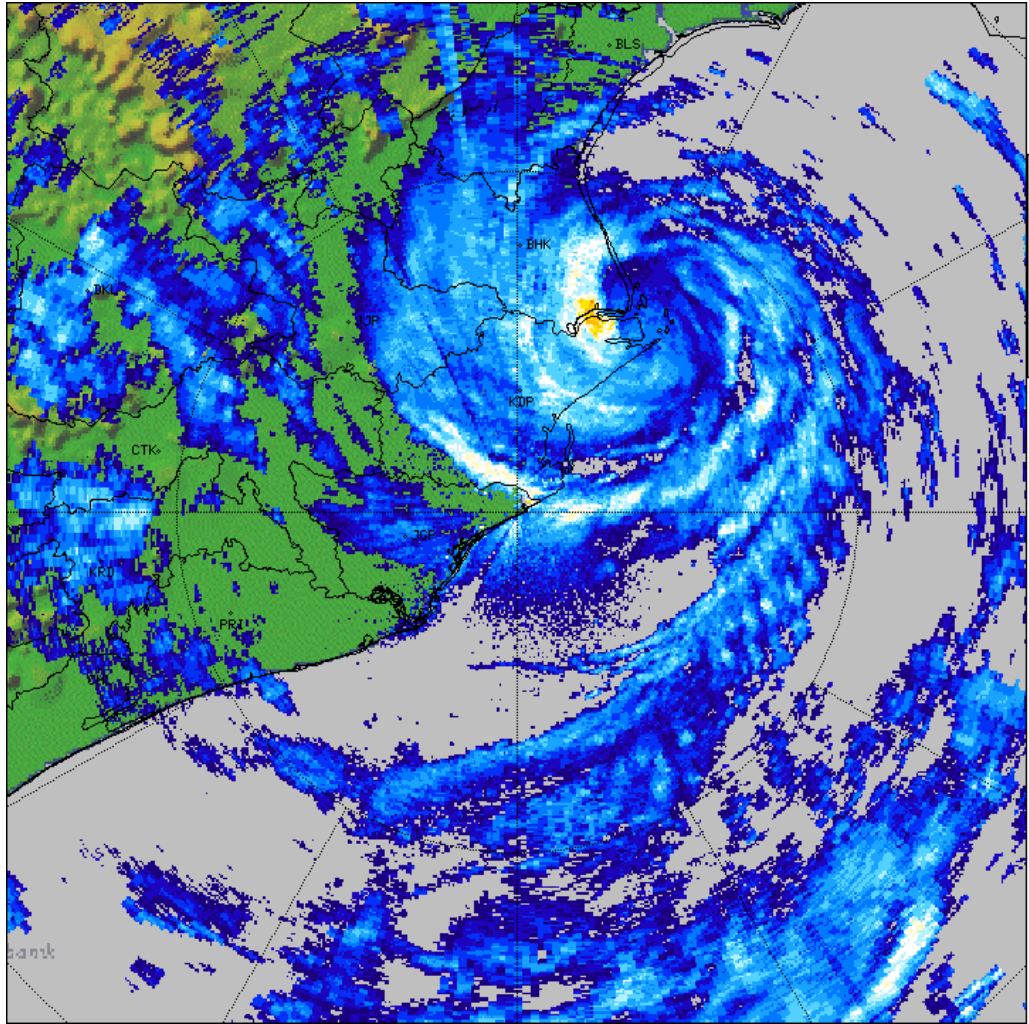




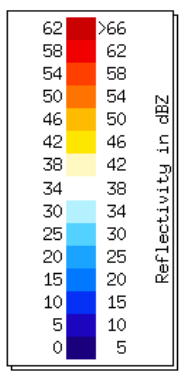
PARADEEP-RADAR  
 PPI  
 PPI\_V  
 Task: IMD-B  
 PRF:600/450  
 Elevation:0.5  
 Max Range:250 km  
**20:52:18Z**  
**24 OCT 2024 UTC**

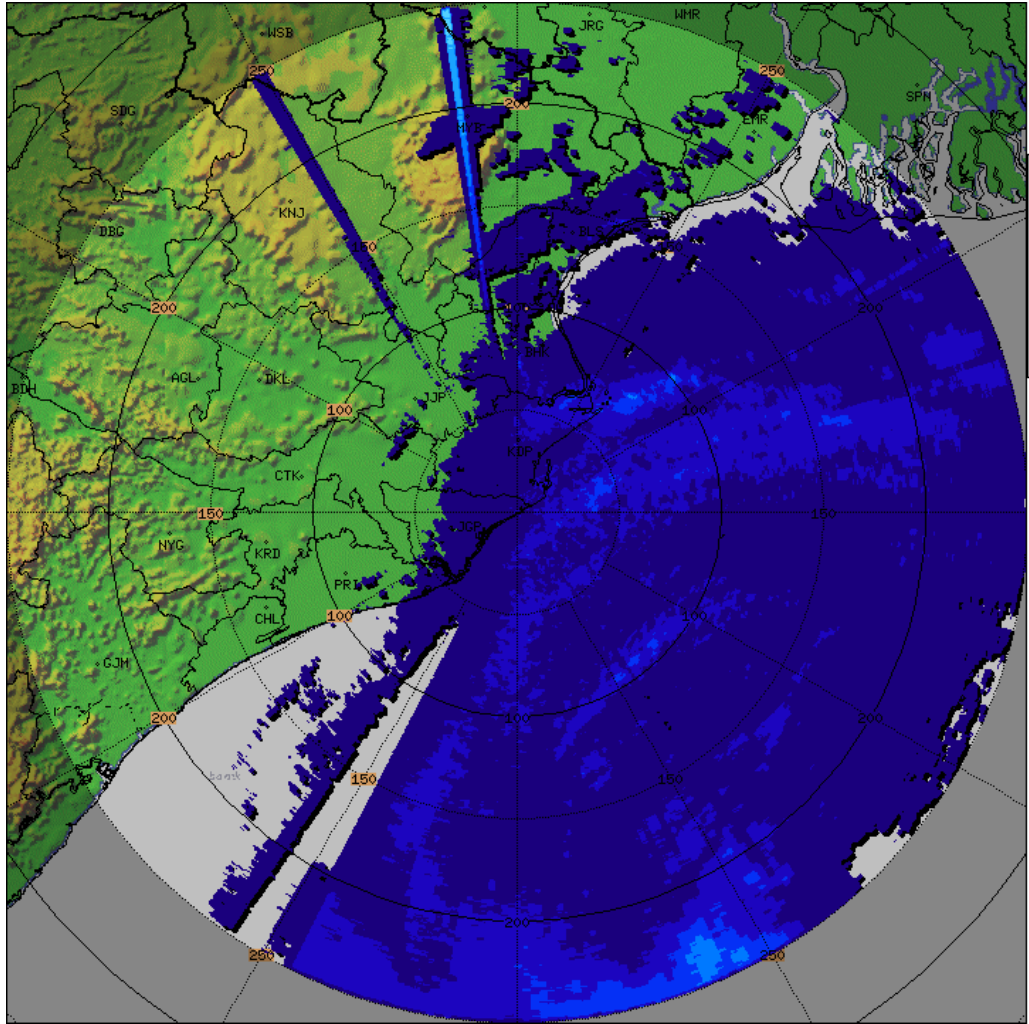






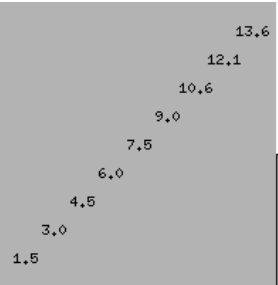
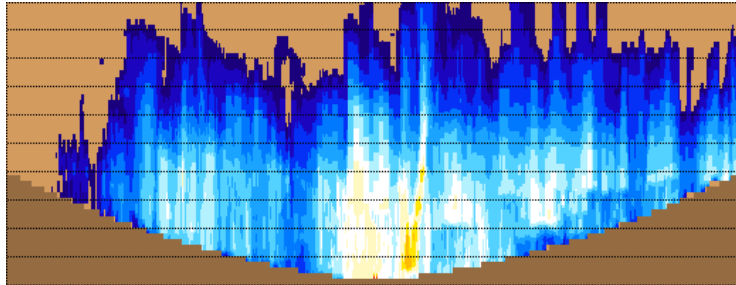
PARADEEP-RADAR  
PPI  
PPI\_150KM  
Task: IMD-B  
PRF:600/450  
Elevation:0.5  
Max Range:150 km  
**21:02:18Z**  
24 OCT 2024 UTC





PARADEEP-RADAR  
 N Hours Rainfall  
 HOUR\_24  
 Task: IMD-B  
 PRF:600/450  
 Hours:21/24  
 Max Range:250 km  
**03:00:00Z**  
**24 OCT 2024 UTC**

| Rain Accum. in mm | Color          |
|-------------------|----------------|
| >100              | Red            |
| 93                | Dark Red       |
| 87                | Red-Orange     |
| 80                | Orange         |
| 74                | Light Orange   |
| 67                | Yellow-Orange  |
| 60                | Yellow         |
| 54                | Light Yellow   |
| 47                | Light Green    |
| 41                | Green          |
| 34                | Light Blue     |
| 27                | Blue           |
| 21                | Dark Blue      |
| 14                | Very Dark Blue |
| 7,6               | Dark Purple    |
| 1,0               | Black          |



PARADEEP-RADAR  
 Max with panels  
 MAX\_Z  
 Task: IMD-B  
 Min Hgt:0.0 km  
 Max Hgt:15.0 km  
 Max Range:250 km  
**21:02:18Z**  
**24 OCT 2024 UTC**

